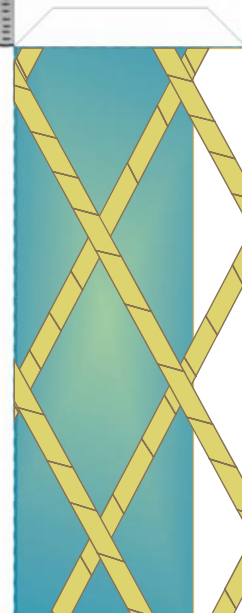


6



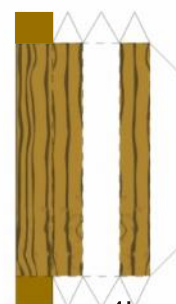
1



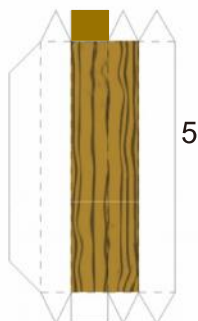
krusty krab free paper model



4R



4L



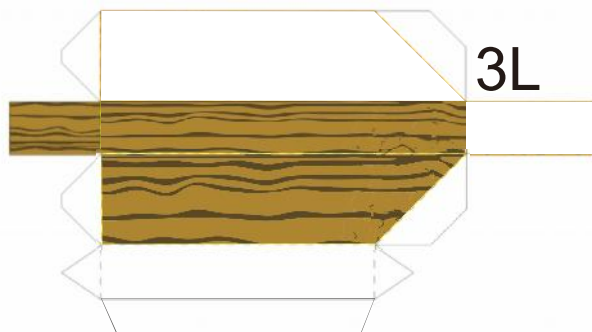
5



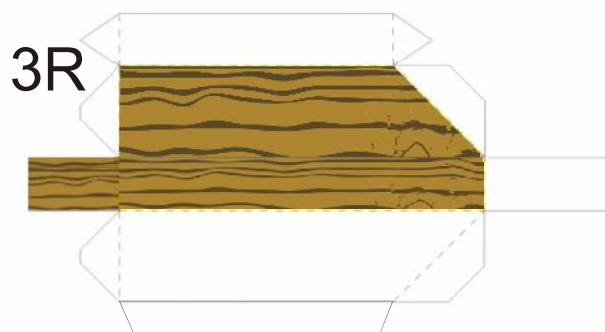
7

cut  
out

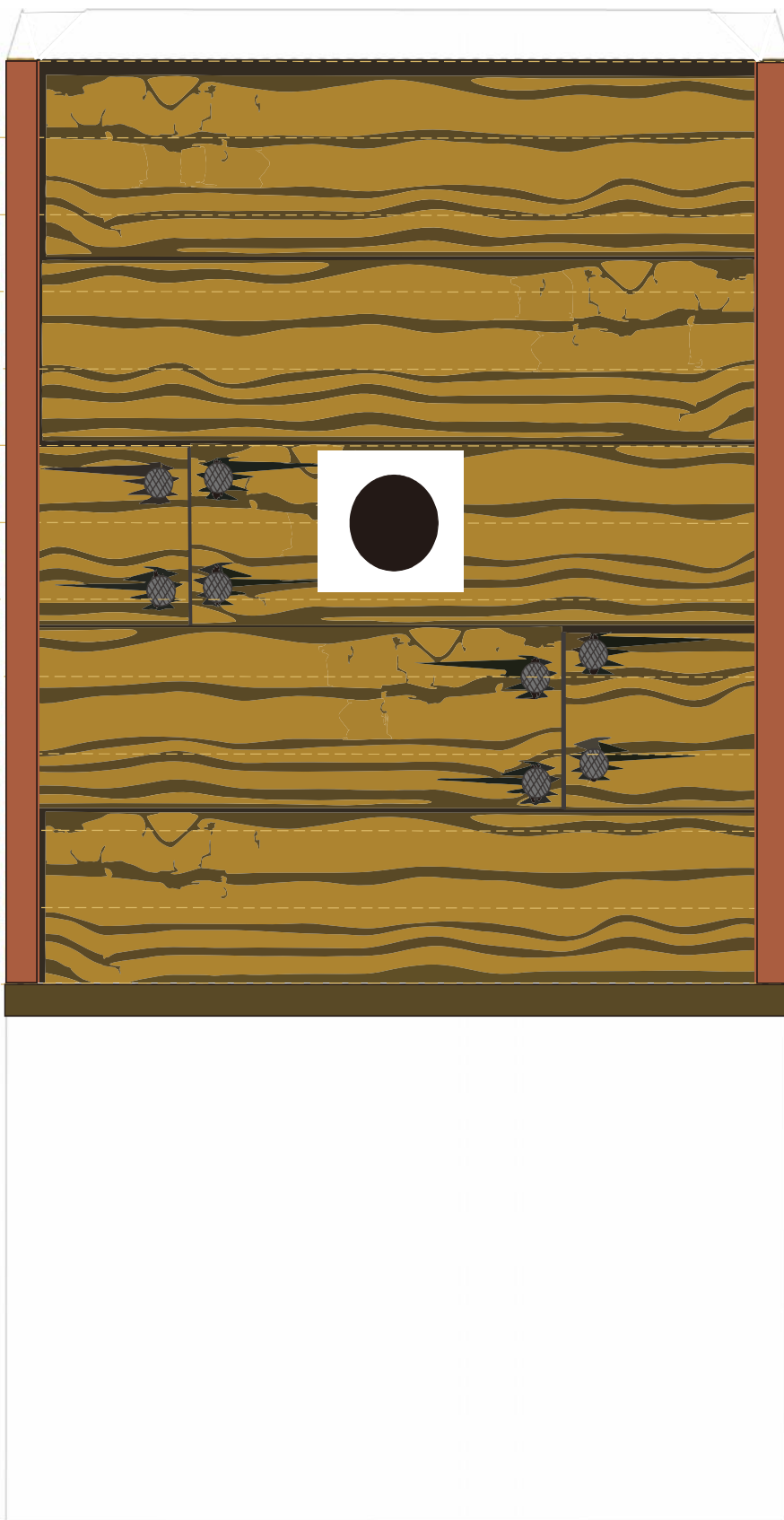
layer with  
heavy card



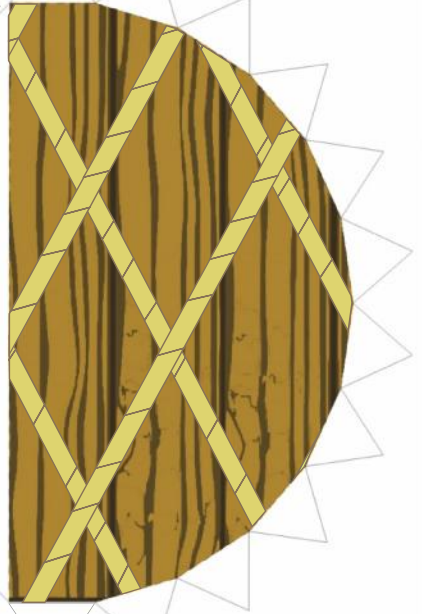
3L



3R



R

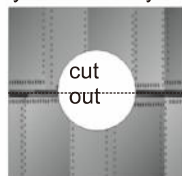


2



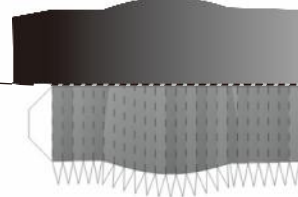
L

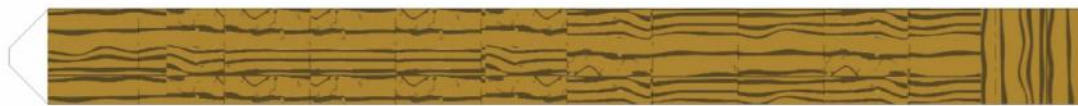
layer with heavy card



8

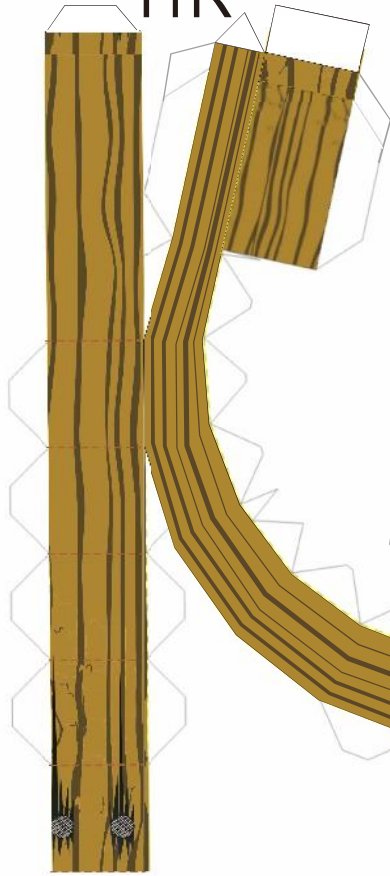
glue back to back





9R

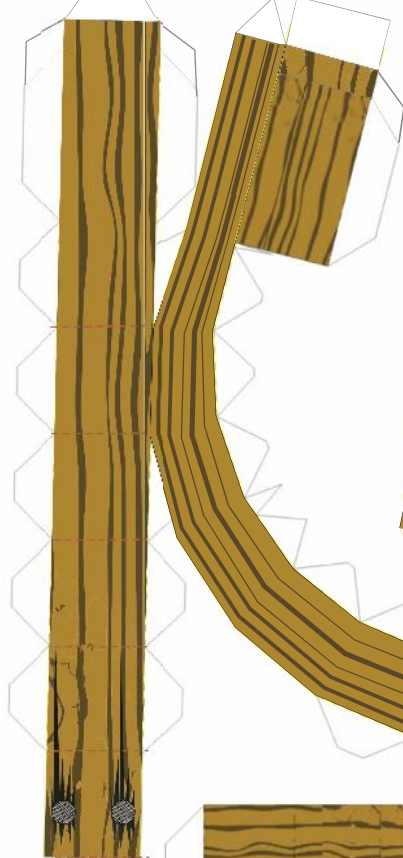
11R



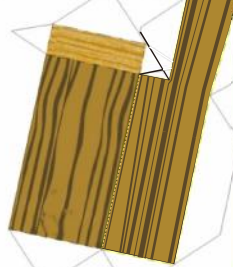
10R



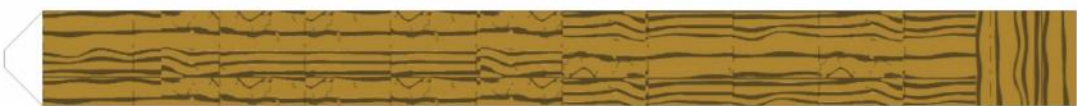
11L

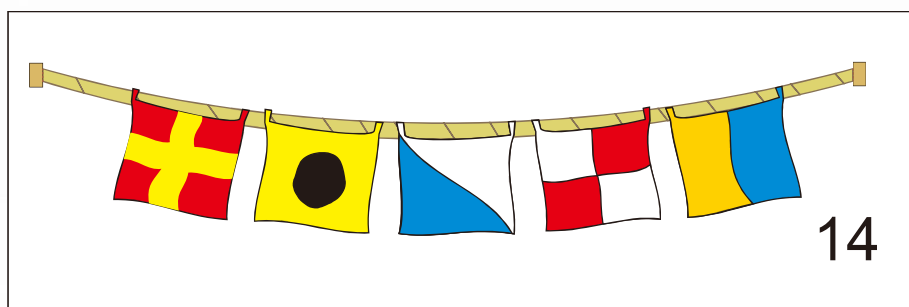
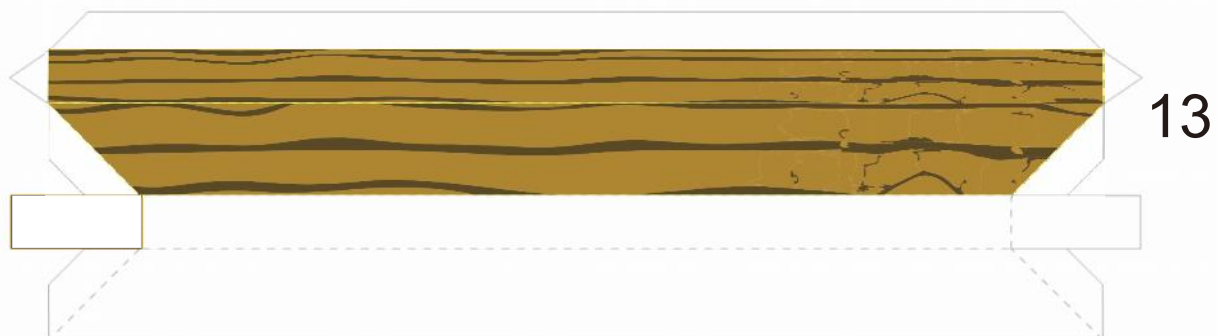
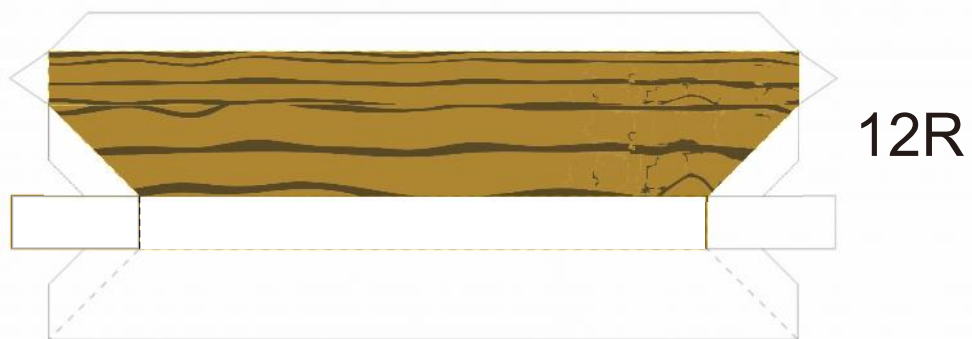


10L



9L

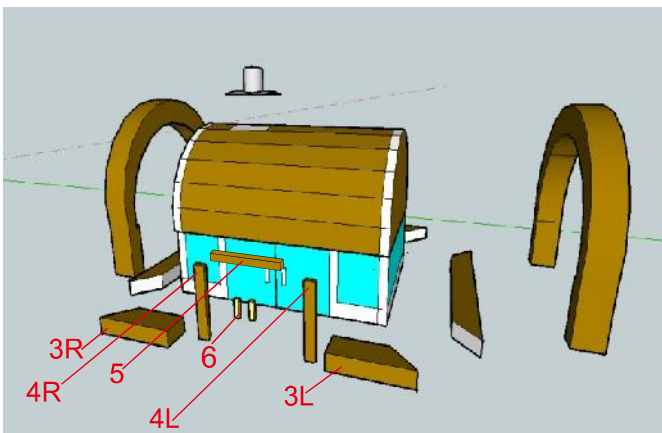
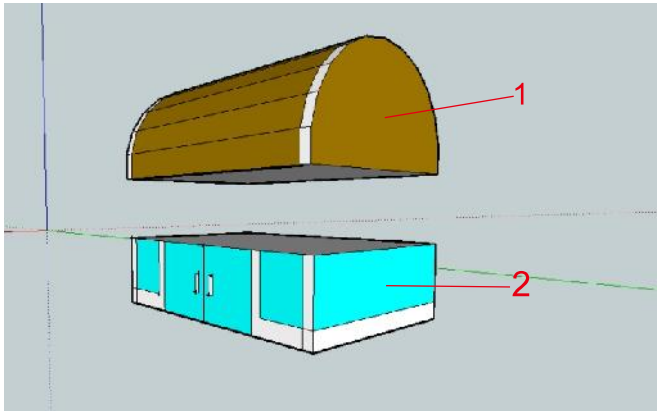




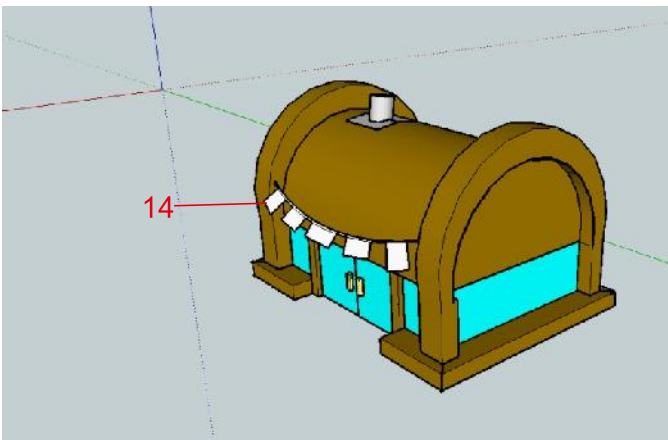
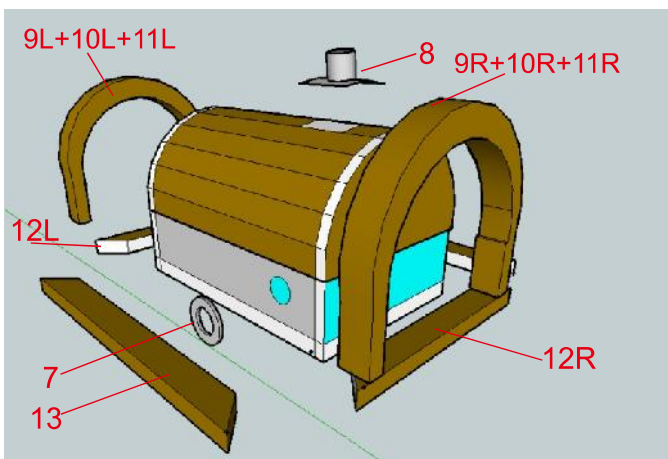


# instruction

FOR PARTS 9,10,11



**add part 11**  
**check for balance on flat surface**  
**each time you glue a flap**



**have fun building!!**

please send the photo of your finished model  
to [nanda.blank@rocketmail.com](mailto:nanda.blank@rocketmail.com)